

M62

THE AFFINITY MAGAZIN

1ST ENGLISH EDITION

AFFINITY STUDIO 3

DESIGN WITH STYLE



DRINKS

LONGDRINKS

COCKTAILS

FRUCHTIG & ERFRICHEND

GESUND UND MUNTER

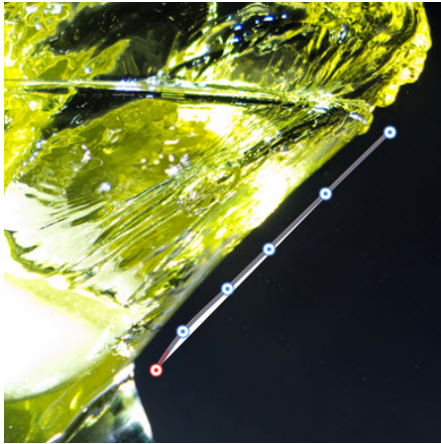
PARADISO

ALTSTADT 24 - KÖLN

DO-SO

22:00 - 06.00

Table display for a cocktail bar



Once you have found a suitable photo for such a project, and it doesn't always have to be a classic photo, you can easily develop an attractive table display or an entire card from it. You can find these kinds of photos on sites like Pixabay. Using the Pen tool, create a suitable path (pen or smart mode) along the edges of the image and refine the line with the Node tool. Then, click on the path with the Artistic-Text tool and enter the desired word. You can adjust this text at any time by editing the path with the Node tool or by changing the text color. When drawing paths, however, you should disable "Snapping" in the menu bar at the top; otherwise, you won't be able to set the path with sufficient detail. The "Limelight" font was used for the name at the bottom of the graphic. For commissioned work, you would, of course, follow the client's specifications.

Importing an Excel spreadsheet

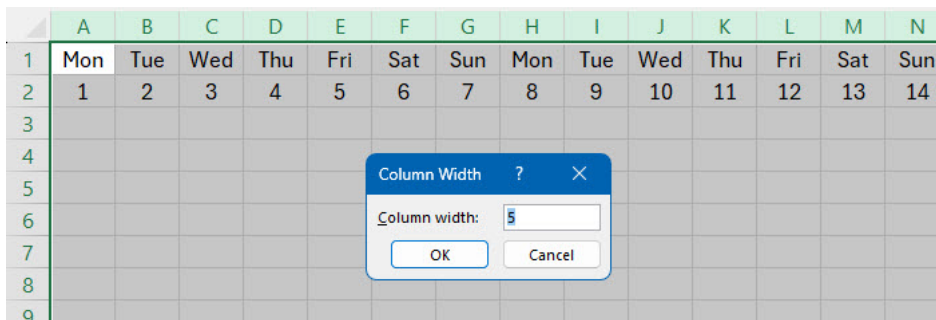
Importing a table from Excel into Affinity Studio is often not ideal. The imported table is often far too long and requires tedious process adjustments. Let's assume you want to record the days of the week with their corresponding entries in a table for a landscape A3 calendar.

Step 1: Create the desired table in Excel and adjust it to fit Affinity's layout. For a landscape A3 calendar (420 x 297 mm), format it in Excel using the PAGE LAYOUT tab. You'll also need to adjust the column widths. Select the table in Excel and right-click to adjust the column widths, which in this case are approximately 5 units. Additi-onally, center all calendar information within the columns. Save the table.

Step 2: In Affinity, create a new A3 file (420 x 297 mm) with 13 or 14 landscape pages using the Layout Studio. Import the Excel spreadsheet using "File—Place" or Ctrl+Shift+M.

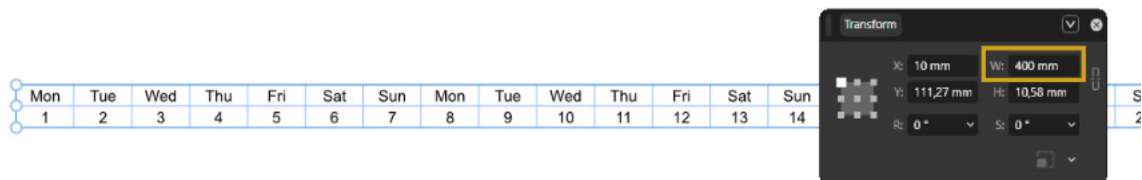
Step 3: Select the spreadsheet and enter the desired width in the TRANSFORM panel. After subtracting the margins, this might be 400 mm.

Step 4: Now you can adjust the spreadsheet to your liking using the TABLE panel.



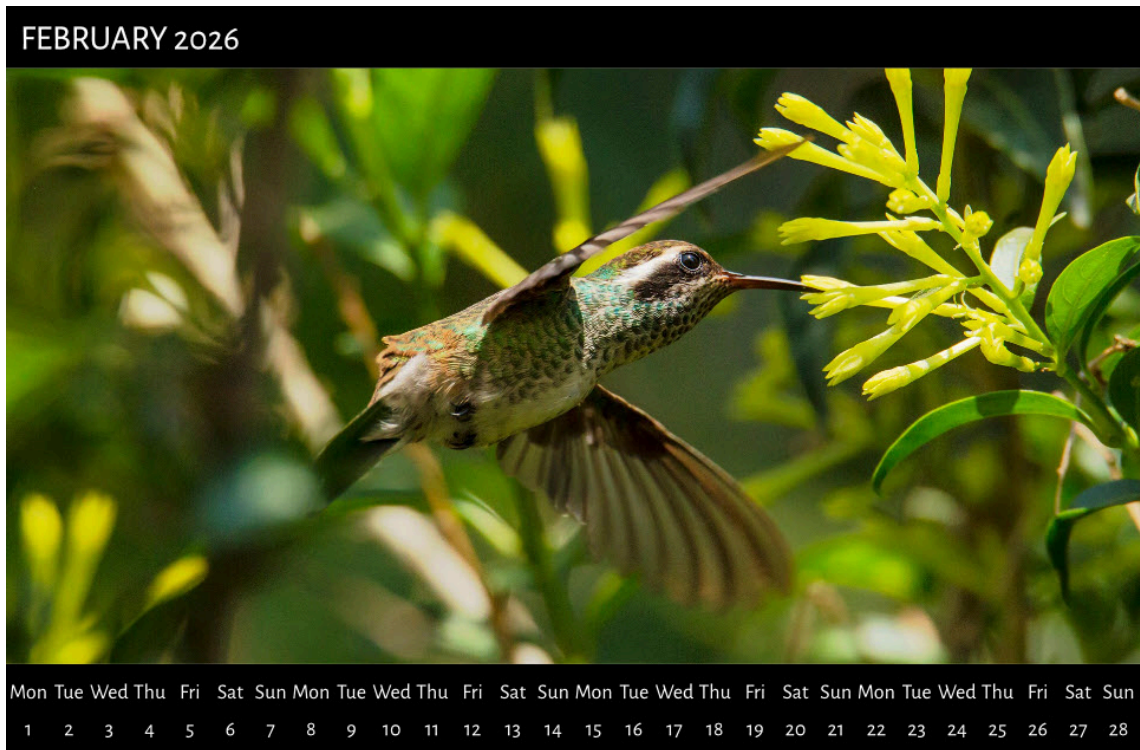
	A	B	C	D	E	F	G	H	I	J	K	L	M	N
1	Mon	Tue	Wed	Thu	Fri	Sat	Sun	Mon	Tue	Wed	Thu	Fri	Sat	Sun
2	1	2	3	4	5	6	7	8	9	10	11	12	13	14
3														
4														
5														
6														
7														
8														
9														

Presets are already configured in Excel

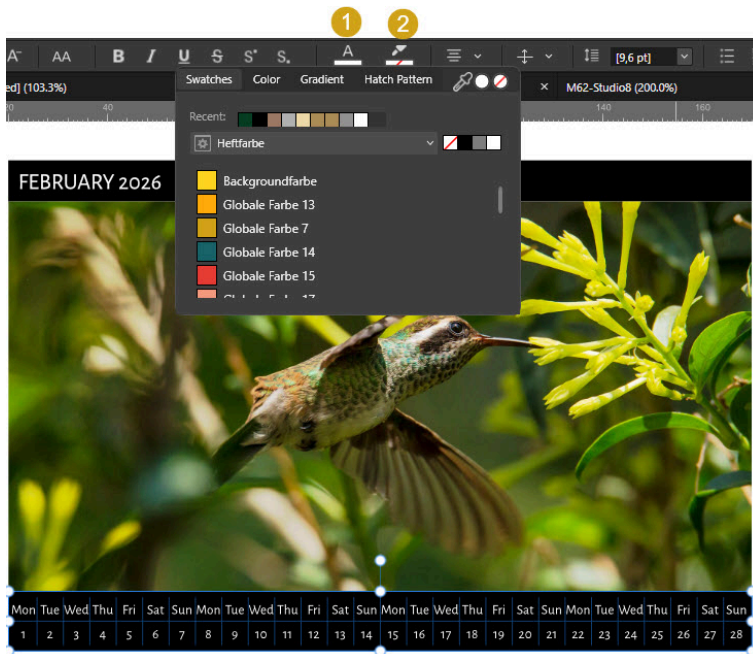


	Mon	Tue	Wed	Thu	Fri	Sat	Sun	Mon	Tue	Wed	Thu	Fri	Sat	Sun
1	1	2	3	4	5	6	7	8	9	10	11	12	13	14

Adjust the table width in Affinity with the „Transform panel“



A typical calendar page



The font color (1) in the calendar is controlled exclusively via the context menu. The "Highlight color" (2) allows you to assign a background color to the text. However, I advise against this, as it doesn't look good.

Lightning fast

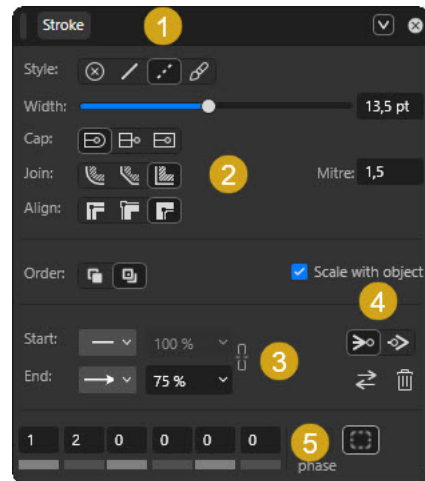
Most Affinity Studio users probably underestimate the possibilities of arrows, which can be assigned to a stroke in the Stroke panel. It's likely that you won't need an arrow very often. The program offers many different types of arrows. If you draw a longer line with the Pen tool, and you want the arrow to curve in a circle, you can also use the Ellipse tool. However, you'll need to convert it to a curve first. In the Stroke panel, you now select (1) either a line, a dashed line, or a line as a path brush. Next, you set the correct WIDTH of the line. Then, you configure several settings for how the line should be displayed (2).

Cap: Round, Blunt, Square

Join: Round, Beveled, Square

Align: Center, Inside, Outside

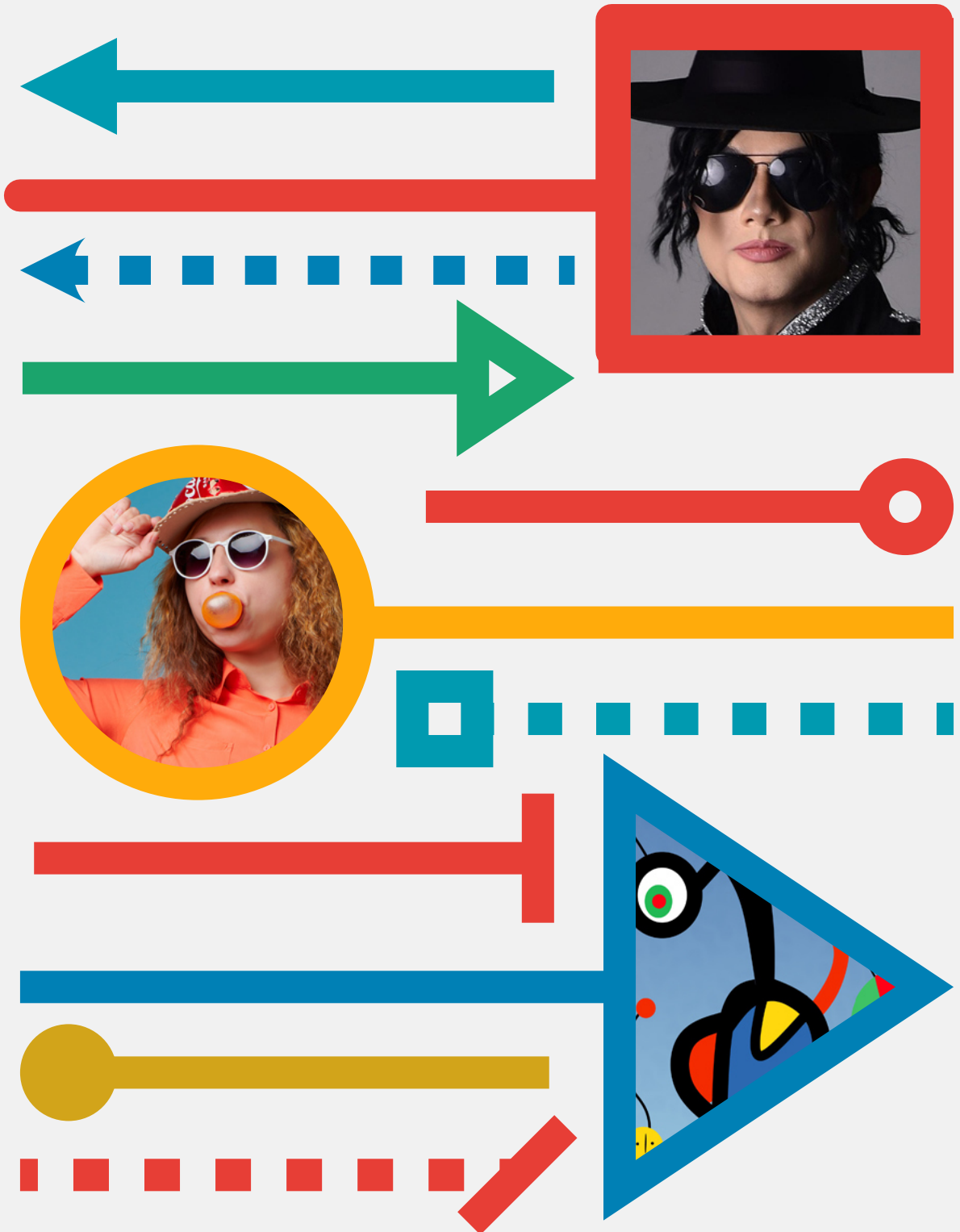
If you want to assign an arrow to the end of the line, you can set this for the beginning or the end of the line (3). The size of an arrow can be adjusted up to 500%. Two switches (4) determine whether an arrow should appear flush with the end of a line or whether it should be "attached" to the line, extending beyond it. Additional icons allow you to reverse the arrow's path or delete an arrowhead. Using PHASES (5), you can adjust the spacing of dashed lines. Values of 1, 1.5, or 2 affect the density of a dashed line.



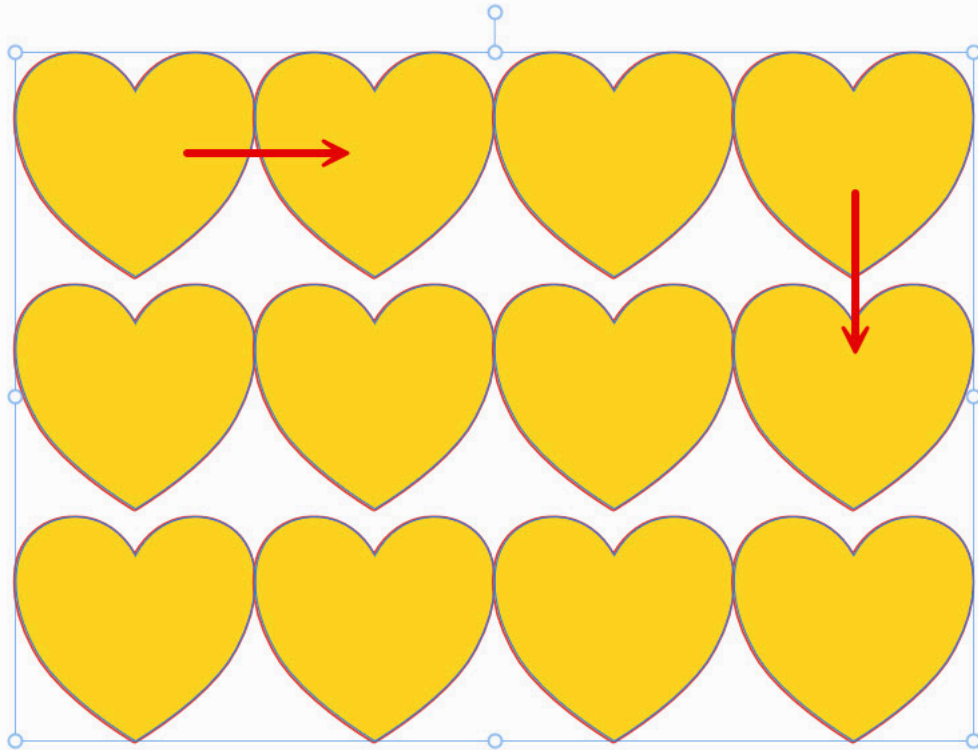
STROKE Panel



For more elaborate designs, you can create square, triangular, or round arrowheads up to 500% in size and place graphics behind them. This is useful for lists of people or enlarged map sections. An arrow extends into the map, and at the end, the area outside the map is displayed in a larger format.



Duplicating



There are several ways to duplicate an object in Affinity Studio. I'd like to describe one particularly useful method here.

Step 1: Draw a heart-shaped element, BUT DO NOT REMOVE THE MOUSE BUTTON.

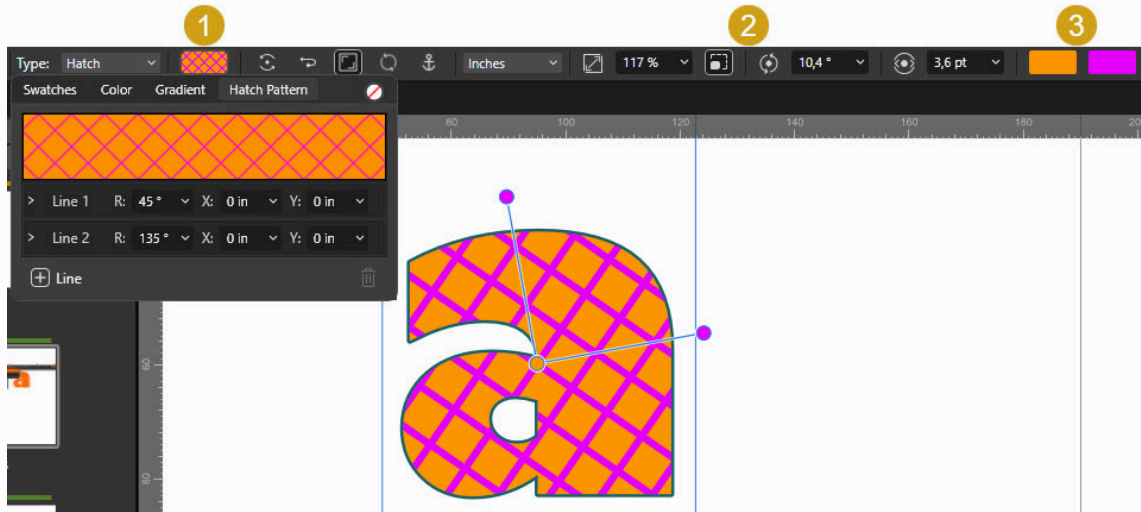
Step 2: Press the right arrow key on your keyboard. The shape will be copied and placed to the right of the first one. You can repeat this as many times as you like.

Step 3: Now press the down arrow key while still holding down the mouse button. This will create copies of the heart shape downwards.

Step 4: Moving the mouse button while holding down the mouse button will resize ALL the hearts (height and width).

Step 5: You can also use the arrow keys to undo entire rows.

Filling with Hatching



Affinity Studio has added a "Hatching" section to the "Swatches" panel. It's best to work with this in the Vector Studio. Select an artistic text or shape, click on the desired hatch pattern in the swatches panel, and the object will be filled with it. Many more settings for this hatch fill are available using the "Fill" tool.

Step 1: Draw a shape or artistic text.

Step 2: Fill it with a hatch pattern using the "Swatches" panel. The first eight entries already produce a very nice hatch effect.

Step 3: Now select the "Fill" tool.

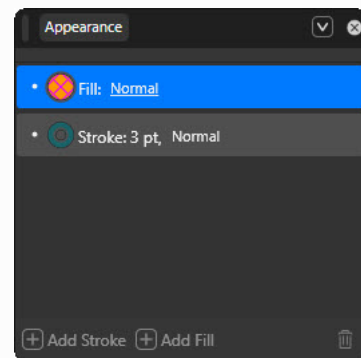
Step 4: Several settings are now visible in the top context toolbar, which you can experiment with.

Step 5: The hatch pattern can be adjusted for multiple lines using many small parameters (1).

Step 6: Adjust the angle and thickness of the lines (2).

Step 7: Assign a background color and a line color (3).

You can also check the settings using the "Appearance" panel. The handles on the object allow you to rotate, shrink, or enlarge the hatching.



Settings are controlled in the Appearance panel.

M62

THE AFFINITY MAGAZIN

1ST ENGLISH EDITION

AFFINITY STUDIO 3

DESIGN WITH STYLE